



*Castle House
Great North Road
Newark
NG24 1BY*

Tel: 01636 650000

www.newark-sherwooddc.gov.uk

Dear Councillor

FULL COUNCIL - WEDNESDAY, 20TH SEPTEMBER, 2023

I now enclose, for consideration, replacements of Map01 – Newark North and Map02 – Newark South in relation to the agenda item below.

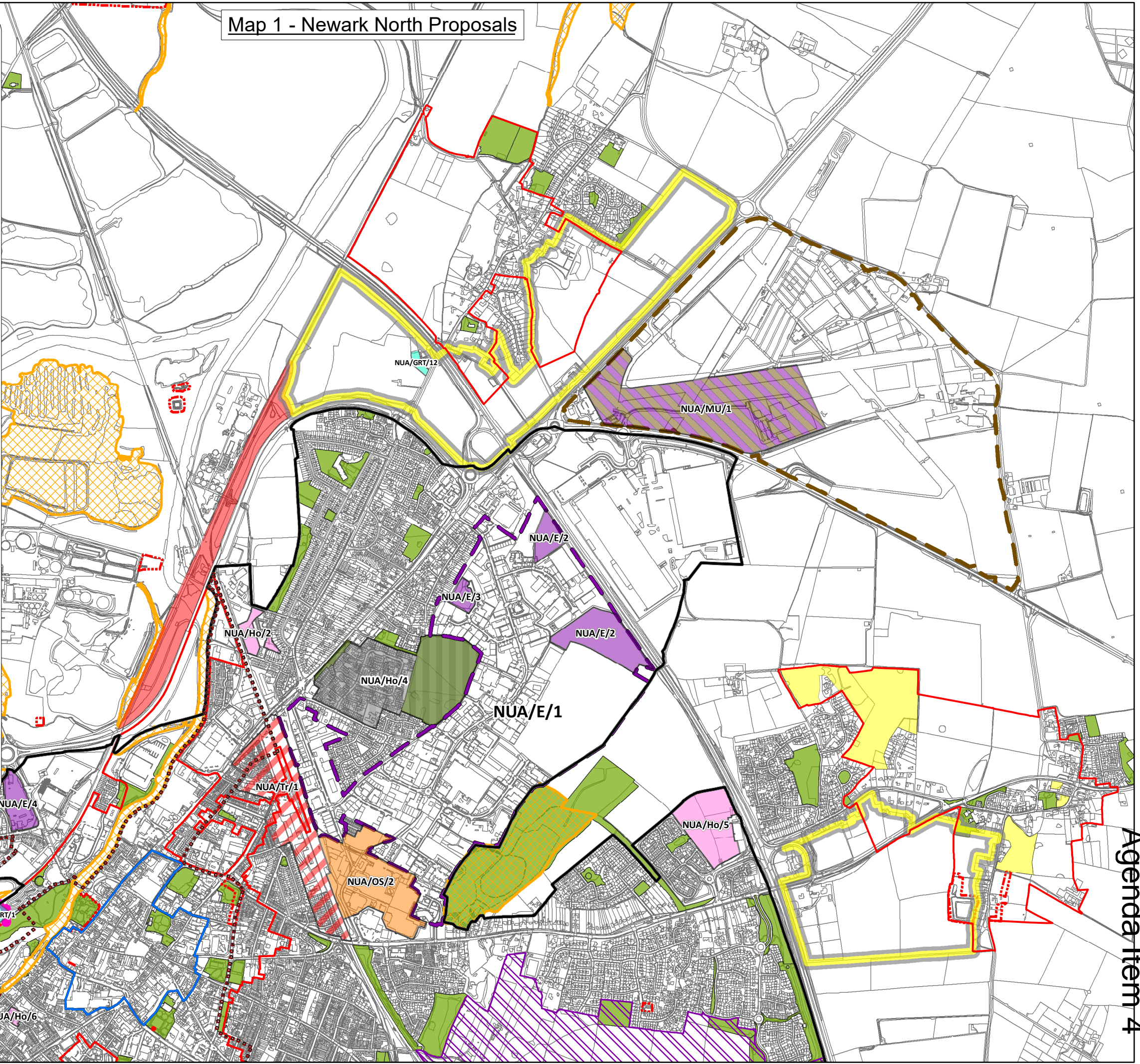
Agenda No Item

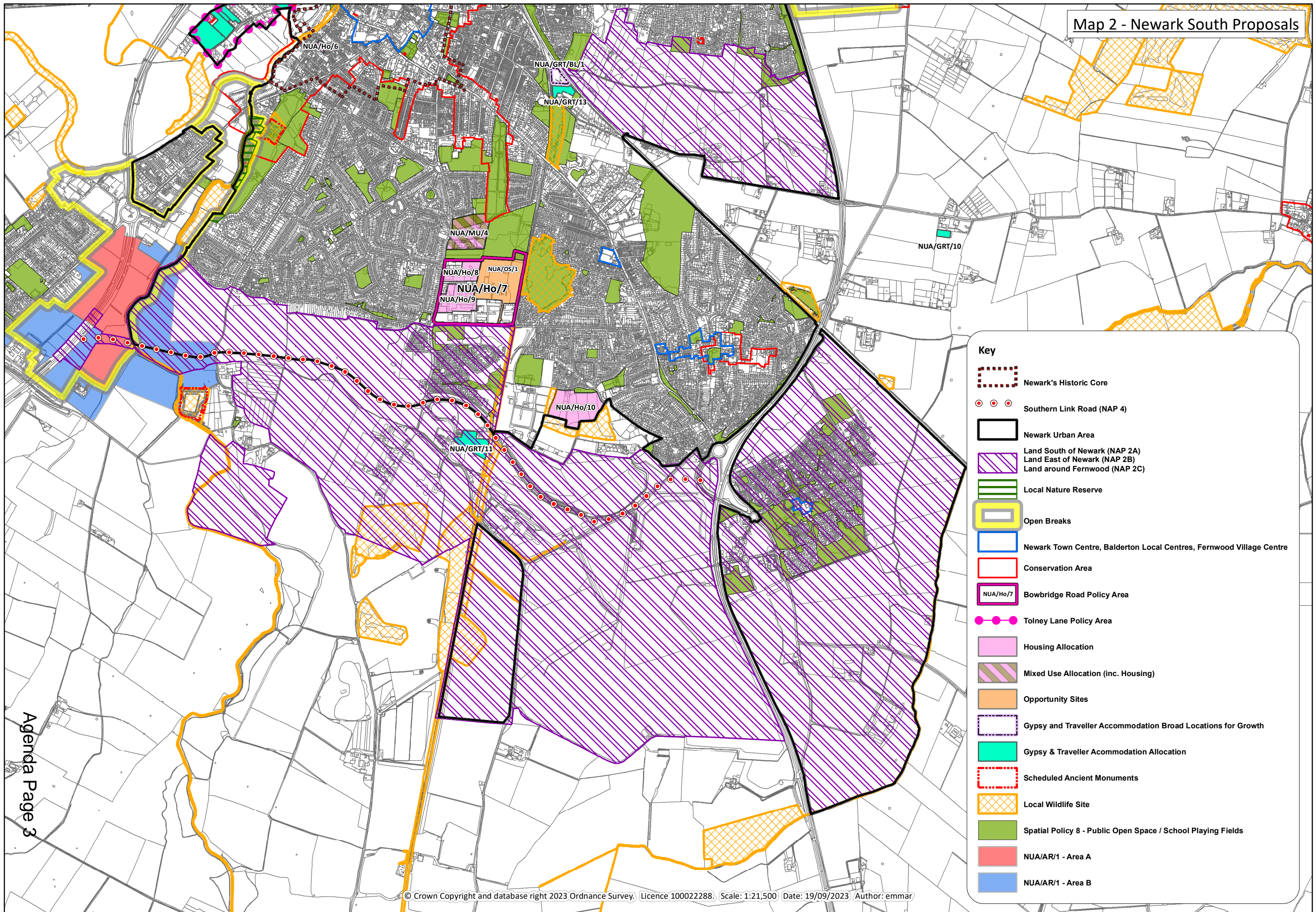
4. Newark & Sherwood Plan Review - Amended Allocations and Development Management Development Plan Document Publication

Map 1 - Newark North Proposals

Key

-  Newark's Historic Core
-  Newark Urban Area
-  Land East of Newark (NAP 2B)
-  Newark Town Centre
-  Conservation Area
-  Open Breaks
-  Employment Allocation
-  Housing Allocation
-  Mixed Use Allocation (Non-Residential)
-  Mixed Use Allocation (inc. Housing)
-  Opportunity Sites
-  Gypsy & Traveller Accommodation Allocation
-  Transport Allocation
-  Newark Industrial Estate
-  Yorke Drive Policy Area
-  Tolney Lane Policy Area
-  Newark Showground Policy Area
-  Newark Flyover SP7
-  Local Wildlife Site
-  Main Open Areas
-  Scheduled Ancient Monuments
-  Spatial Policy 8 - Public Open Space / School Playing Fields





Key

- Newark's Historic Core
- Southern Link Road (NAP 4)
- Newark Urban Area
- Land South of Newark (NAP 2A)
- Land East of Newark (NAP 2B)
- Land around Fernwood (NAP 2C)
- Local Nature Reserve
- Open Breaks
- Newark Town Centre, Balderton Local Centres, Fernwood Village Centre
- Conservation Area
- Bowbridge Road Policy Area
- Tolney Lane Policy Area
- Housing Allocation
- Mixed Use Allocation (inc. Housing)
- Opportunity Sites
- Gypsy and Traveller Accommodation Broad Locations for Growth
- Gypsy & Traveller Accommodation Allocation
- Scheduled Ancient Monuments
- Local Wildlife Site
- Spatial Policy 8 - Public Open Space / School Playing Fields
- NUA/AR/1 - Area A
- NUA/AR/1 - Area B